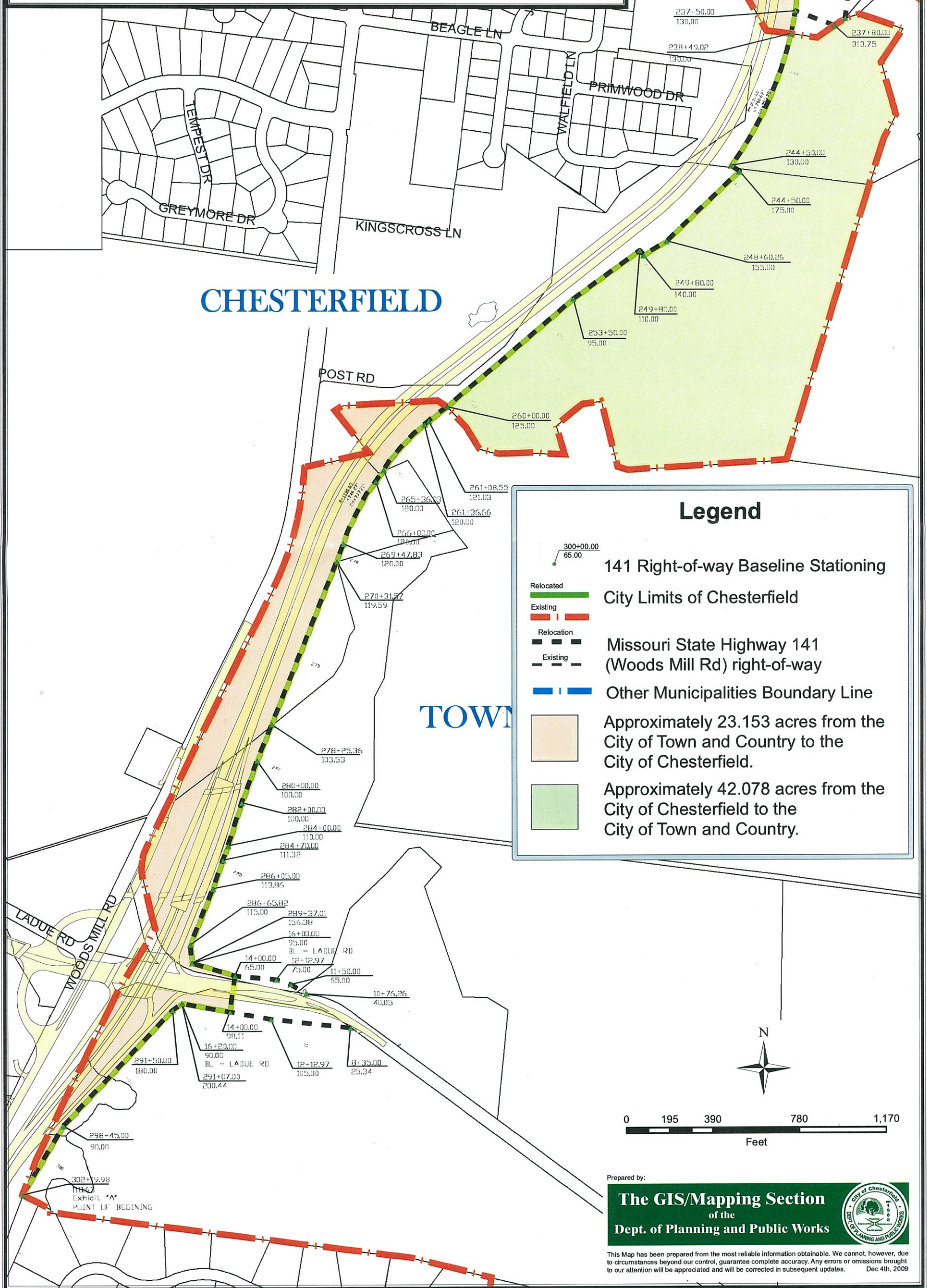


EXHIBIT "A"

State Highway 141 (Woods Mill Road) City Limits Relocation between the City of Chesterfield and Town & Country



CHESTERFIELD

TOWN & COUNTRY

Legend

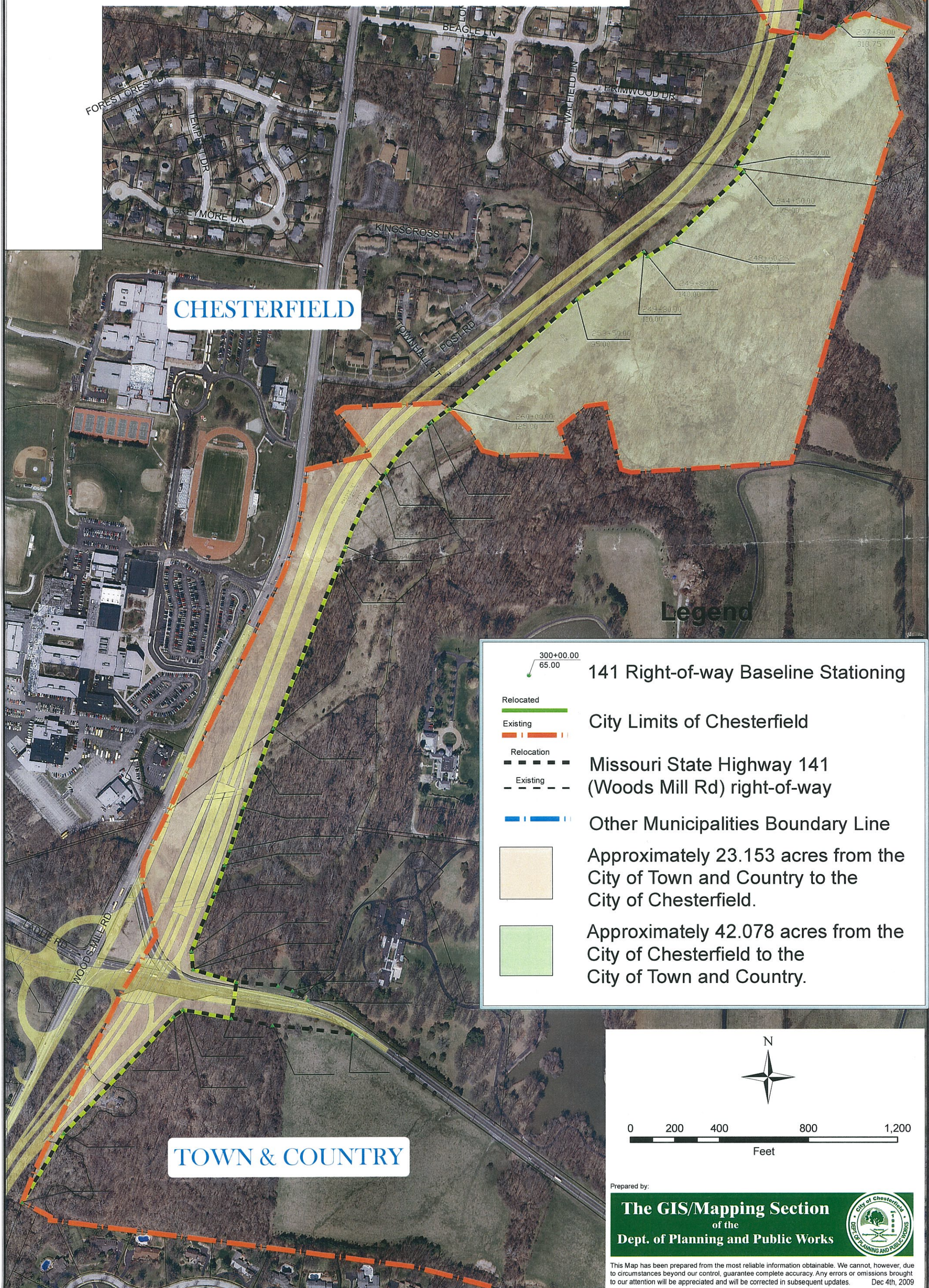
- 300+00.00
65.00
- Relocated
- Existing
- Relocation
- Existing
- Other Municipalities Boundary Line
- Approximately 23.153 acres from the City of Town and Country to the City of Chesterfield.
- Approximately 42.078 acres from the City of Chesterfield to the City of Town and Country.

Prepared by:
The GIS/Mapping Section
of the
Dept. of Planning and Public Works

This Map has been prepared from the most reliable information obtainable. We cannot, however, due to circumstances beyond our control, guarantee complete accuracy. Any errors or omissions brought to our attention will be appreciated and will be corrected in subsequent updates. Dec 4th, 2009

EXHIBIT "A"

State Highway 141 (Woods Mill Road) City Limits Relocation between the City of Chesterfield and Town & Country



CHESTERFIELD

TOWN & COUNTRY

300+00.00
65.00

141 Right-of-way Baseline Stationing

Relocated
Existing

City Limits of Chesterfield

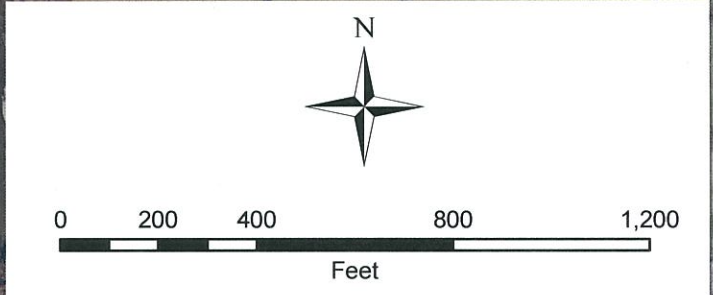
Relocation
Existing

Missouri State Highway 141 (Woods Mill Rd) right-of-way


Other Municipalities Boundary Line

Approximately 23.153 acres from the City of Town and Country to the City of Chesterfield.

Approximately 42.078 acres from the City of Chesterfield to the City of Town and Country.



Prepared by:
The GIS/Mapping Section
of the
Dept. of Planning and Public Works



This Map has been prepared from the most reliable information obtainable. We cannot, however, due to circumstances beyond our control, guarantee complete accuracy. Any errors or omissions brought to our attention will be appreciated and will be corrected in subsequent updates. Dec 4th, 2009

	Acreage reduced from	Acreage increased to	Net Acreage Change
Chesterfield	66.844	23.153	(43.691)
Creve Coeur		24.766	24.766
Town & Country	23.153	42.078	18.925